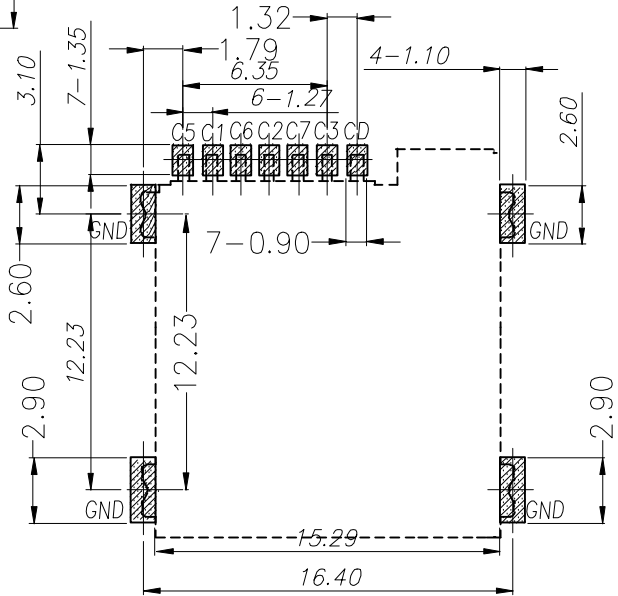
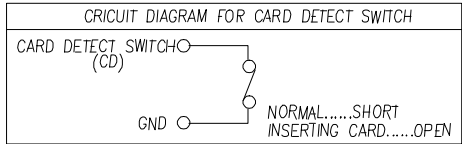


MICRO SIM CARD



PCB 焊盘区
下板建设区

RECOMMENDED PCB LAYOUT
GENERAL TOLERANCE ±0.05



CRICUIT DIAGRAM FOR CARD DETECT SWITCH

Specification

MATERIAL:
Insulator: High Temperature Thermoplastic, (UL 94V-0)
Contact: Copper Alloy
SHELL: SIS

PLATING:
Contact: Plated 80" Ni Overall Contact Au 1U
Shell: Plated 60" Ni Overall
Plated in Au Solenitive Contact Area

Electrical:
Current Rating :0.5mA AC/DC max.
Voltage Rating :15V AC/DC
Ambient Temperature Range :-20° C~+60° C
Storage Temperature Range :-40° C~+70° C
Ambient Humidity Range :90% R.H. Max.
Contact Resistance:100Ω max. Q
Insulation Resistance:100M Ωmin./500VDC
Mating Cycles:10,000 Insertions
产品耐插拔: 200° C 1.5A, 20° C 1.5A
Mating Cycles:5,000-10,000 Insertions

SIM pin assignment	
PIN#	Name
C1	VCC 供电电压
C2	RST 重置
C3	CLK 时钟
C5	GND 接地
C6	VPP 程序电压
C7	I/O 输入输出

UNLESS OTHERWISE SPECIFIED TOLERANCE			
UNIT:	DECIMAL	LINEAR	ANGLES
mm	X.	±0.50	±5°
	X.X	±0.25	±3°
	X.XX	±0.12	±1°

东莞市讯普电子科技有限公司

www.xunpudianzi.com

DRAWN	Fros	2014/12/12	DRAWN NAME:	SIM CONNECTOR
CHECKED	Ron	2014/12/12		
APPROVED	Albert	2014/12/12	PRODUCT NO.	SMC-202-7
SCALE 3.2		SHEET 1/1	SIZE	A4